

# VCSE & ICB: developing our strategic partnership with the VCSE sector

Engagement event for creative  
and cultural sector, 10/9/24

**Mark Hubbard – VCSE Lead, ICB**

mark.hubbard@nhs.net 07535 105875



# Context – VCSE in Healthier Together



# Standard definition of VCSE – from the BNSSG VCSE Alliance

VCSE means a Voluntary, Community or Social Enterprise organisation which serves the community. VCSE organisations have common features as follows:

- **Beneficial and accountable to the community:** They have social objectives to benefit the community and are accountable to the community.
- **Formal:** They have a formal and recognisable structure that is described in a constitution or a formal set of rules. They are registered with the relevant register or regulator.
- **Non-profit making:** They do not distribute profits to owners or directors but reinvest them in the sustainability of the organisation or use them for the benefit of the community.
- **Self-governing:** They are truly independent in determining their own course, with at least three trustees or directors or management committee members (who are not related to each other and are not paid shareholders) and a bank account in its own name.
- **Independent:** They are separate from the state and private sector.
- **Supported through volunteering and embrace community action:** They involve a meaningful degree of voluntary participation through having, for example, a trustee board/committee and volunteers.
- **Non-party political.**

VCSE organisations may have several structures or forms – one of which must be in place for an organisation to join the VCSE Brokerage Framework.

- Charitable Incorporated Organisation
- Community Benefit or Industrial Provident Society
- Community business (company limited by shares\*)
- Community Interest Company limited by guarantee
- Community Interest Company limited by share (Schedule 2 with 100% asset lock only)
- Company limited by guarantee
- Registered charity
- Unincorporated association

\* It is recognised that a community business, which has clear community purpose and benefits, may be a company limited by shares.

This definition is based on the following sources: National Community Lottery Fund, Bristol Impact Fund, NCVO, Quartet Community Foundation, Power to Change and Co-operatives UK.

# VCSE: background

The ICS implementation guidance requires ICS leaders to ensure **closer working with the VCSE sector** in their governance and decision-making arrangements as a **strategic partner in shaping, improving and delivering services**; and in developing and delivering plans to **tackle the wider determinants of health**.

This includes involving the VCSE sector in **governance structures**, in **population health management and service redesign work**, and in system **workforce, leadership and organisational development plans**.

Source: NHS England and NHS Improvement 2021

- 8,000 VCSE organisations in BNSSG
- 80% are smaller – up to £100,000 turnover, handful of staff
- VCSE offer to Healthier Together
  - wider determinants of health
  - secondary prevention in communities
  - reach into excluded communities
  - intel/insights/voice of those communities.
- Potential not realised
  - Example: West Yorkshire ICS
  - 5,200 registered organisations
  - 30,000 staff – 49m hours of work
  - 120,000 volunteers – 9m hours
  - £4.5bn contribution to local economy.
- Much potential to align and invest in VCSE activities to tackle inequalities and secondary prevention

# Achievements: VCSE in Healthier Together

## Programmes

- Discharge to Assess
- Social Prescribing
- Ageing Well
- Mental Health Alliance
- Vax Vols
- Covid-19 pandemic responses

## Contracts / investment

- 6x VCSE Locality Partners' contracts
- Grants for VCSE Alliance and VCSE Brokerage development
- Health inequalities fund

## Governance / partnerships

- Many VCSE allies and wide recognition of the need to include VCSE sector in system developments
- VCSE leadership: Volunteering for Health
- VCSE participation: WorkWell; Locality Partnerships
- 8 VCSE places (incl 2 for community voices) and VCSE Infrastructure standing places on the Integrated Care Partnership Board
- 1 VCSE place on ICB Board
- and much more

# Context: VCSE in our ICS

Whilst local authorities have worked with the VCSE sector for many years, the NHS has less developed practice. With the Integrated Care System, there are new requirements on systems, particularly the NHS, to integrate and work effectively with the VCSE sector.

Challenges to VCSE integration include:

- **Communications, language and culture** - different approaches, such as medical and social models; sector-based jargon.
- **Shared strategic leadership** - joint development of strategic and systemic approaches; engaging with programmes and governance structures; different scales of operation and responsibility.
- **Knowledge of services** - joint understanding of services offered; understanding of integrated services in a wider system.
- **Diversity and single point of access** - desire for easy access to multiple and complex community services; diversity of providers (micro, small, medium, large) with different clients, legal structures, resources and histories.
- **Locality-based working and specific communities** - the tension between geographic provision and inclusion of organisations that serve communities of interest and practice.

**There is no system-wide strategic approach to VCSE integration.**

# VCSE Brokerage Framework

Co-designing a new  
system-wide approach to  
reach VCSE organisations  
that serve communities that  
experience inequalities



# VCSE Brokerage Framework – overview

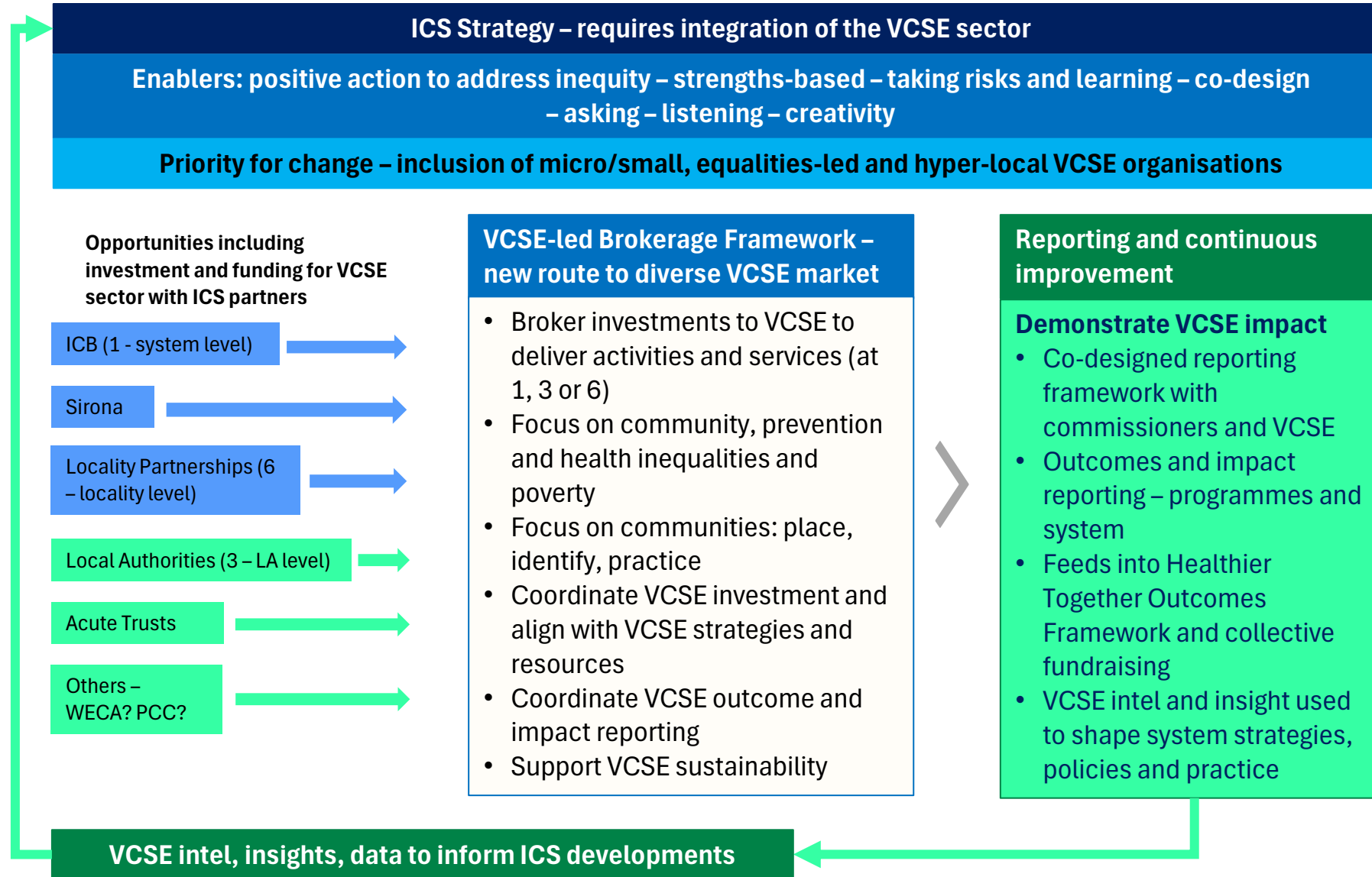
A **new route to a diverse VCSE** market co-designed to enable **micro / small, equalities-led and hyper-local** VCSE organisations to deliver wellbeing and health improvements in communities.

**Co-designed** to include VCSE organisations that are not linked in already as a positive action **to address systemic inequalities**, as well as larger VCSE organisations.

**Enables collaboration** with Locality Partnerships, local authorities and ICS partners **to build on existing processes and relationships**.



# VCSE Brokerage service – overview (Sept 2024)



Phase 1

Future phase

Note: this process is under development, Sept 2024. Contact Mark Hubbard, BNSSG ICB for more information.

# VCSE Brokerage Framework – benefits

## For people and communities

- Range of wellbeing and health activities / support designed to meet the diversity of the population.
- Activities delivered by peers and organisations of the community.
- Trusted relationships with local and connected VCSE organisations.

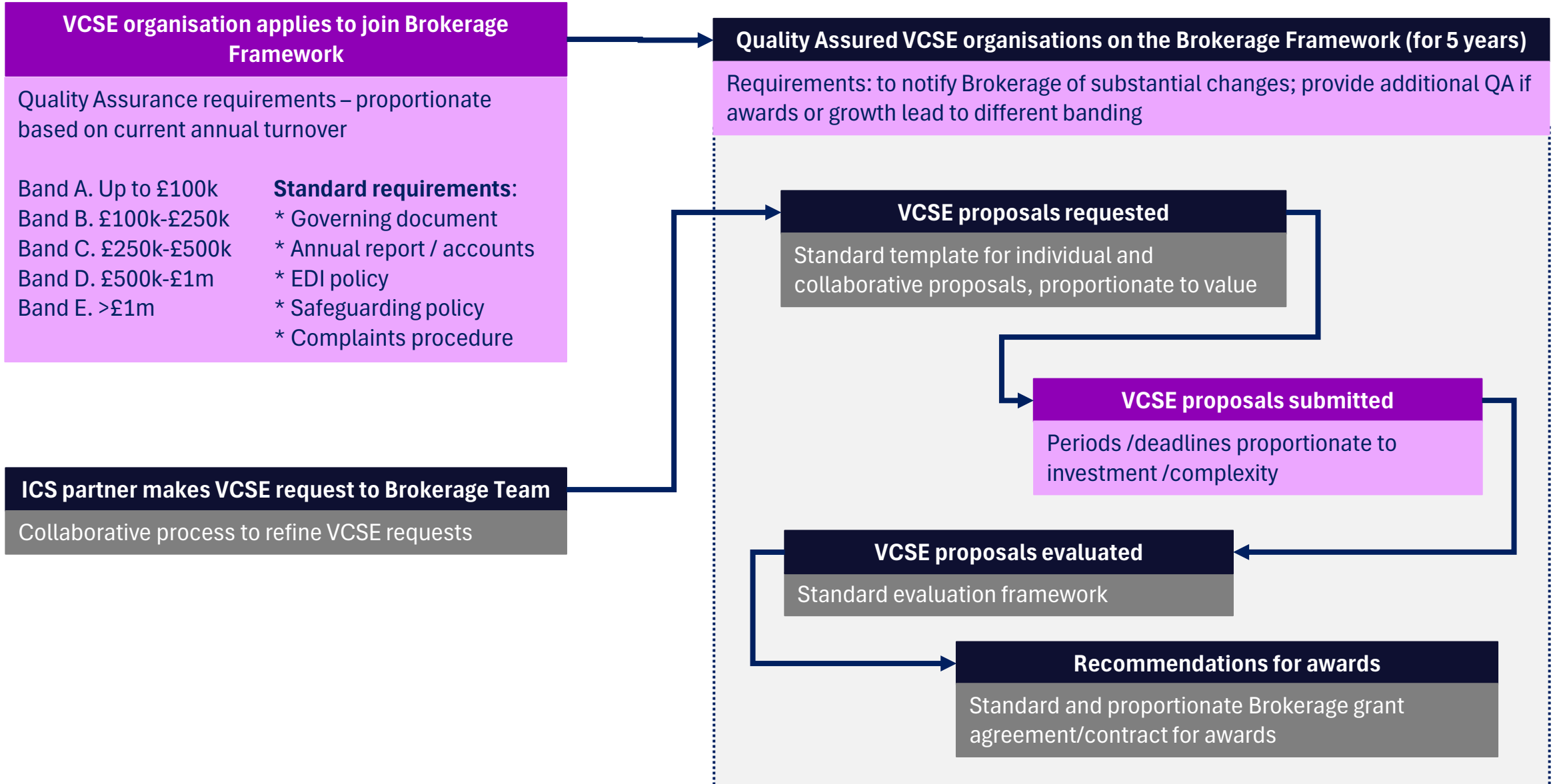
## For diverse VCSE organisations

- Positive action to include micro/small, equalities-led and hyper-local organisations, alongside including larger organisations.
- Proportionate, transparent, standard process to access health / ICS investment.
- Clear links to system outcomes and impact – to increase visibility and scope of VCSE contributions; to inform system developments.

## For programme directors and ICS partners

- Reach to diverse, quality assured VCSE organisations that are place-, identity- and practice-based.
- Ready to go, robust, inclusive process.
- Support to design asks of VCSE.
- Programme and system outcomes.
- Oversight of evaluation process and panels.
- Ready-made grant / contract templates.

# VCSE Brokerage Framework – stages



# VCSE Brokerage – Autumn24 programmes – tbc

## Cancer Against Communities (BNSSG)

Source: ICB

This programme aims to engage communities and support the earlier diagnosis of cancers to improve outcomes and survival.

Subject to community engagement, it will focus on communities with health inequalities and activities will be delivered by VCSE organisations with targeted communities.

Total: **£150,000** non-recurrent

## Children's Wellbeing (North Somerset)

Source: North Somerset, Sirona, ICB

This programme will focus on children's wellbeing, mental health and healthy weight in North Somerset.

Co-funded by Sirona, North Somerset Council and the Locality Partnerships, activities will build a coordinated wellbeing offer for children in North Somerset both for targeted referrals and self-referrals.

Total: **£250,000**

- £150,000 Year 1
- £50,000 per annum for Years 2 and 3

## Falls Prevention (BNSSG)

Source: Proactive Care Fund, ICB

The prevention of falls and prolonged lying on the floor after falling has a large impact on people's health. This programme will build on established, proven activities (for example, strength and balance classes) and coordination across BNSSG (through the Falls Collaboratives) to ensure effective and inclusive delivery in targeted communities.

Total: **£718,000** over 3 years

## Work Well (BNSSG)

Source: DWP Work Well Vanguard, ICB, WECA

The BNSSG WorkWell programme is an integrated approach focused on supporting disabled people and people with health conditions to start, stay and thrive in work.

It aims to tackle health, social and employment barriers that can lead to people leaving work, or being unable to return after sickness.

Total: **£180,000**, with potential for £300,000 later

Co-design and collaboration with Programme Directors, experts, with links to 1:3:6 partners – to form partnership evaluation panels to ensure the best proposals are supported and link with other ICS developments.

# VCSE Brokerage – dates and action

From 17<sup>th</sup> July – invitations to VCSE organisations to join the framework  
**‘Joining the framework’ briefing sessions**

- 30<sup>th</sup> July
- 12<sup>th</sup> August
- 4<sup>th</sup> September

**Assurance panel dates** (with deadlines for applications):

- 5<sup>th</sup> September (23<sup>rd</sup> Aug)
- 1<sup>st</sup> October (20<sup>th</sup> Sept)
- 6<sup>th</sup> November (25<sup>th</sup> Oct)

From 23<sup>rd</sup> September – VCSE organisations on framework invited to develop  
**proposals for programmes**

**Action: join the framework:** <https://bnssghealthiertogether.org.uk/staff-and-partners/voluntary-community-and-social-enterprise-vcse/vcse-brokerage-framework/>

# Thank you

**Mark Hubbard**

**VCSE Lead, ICB**

[mark.hubbard@nhs.net](mailto:mark.hubbard@nhs.net)

07535 105875

